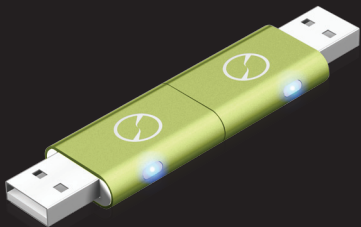




The USB Drive Reinvented



Guide for Mac OS X

Starting Notes

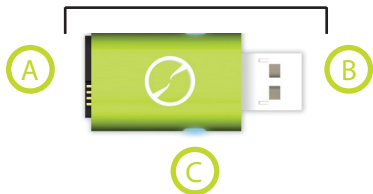
- 1 This guide will show you how to use iTwin on Mac OS X (Snow Leopard/Lion). For Windows, please visit iTwin.com/support.
- 2 iTwin requires a fast broadband Internet connection and two online computers to which you have Admin access.
- 3 In this guide, 'Local computer' refers to the computer you are currently using. 'Remote computer' refers to the other computer, which you are accessing over the Internet using iTwin.

Table of Contents

- | | |
|-----------|-------------------------------------------------|
| 1 | Your iTwin |
| 2 | 3 Essential Parts of the iTwin Interface |
| 6 | Installing iTwin on Mac OS X |
| 10 | Sharing Files & Folders For Accessing On-The-Go |
| 12 | Accessing or Copying Files & Folders On-The-Go |
| 15 | Backing Up Files & Folders On-The-Go |
| 17 | Preventing Unauthorized Access |
| 20 | Using Multiple iTwins on a Computer |
| 26 | Setting Read/Write Permissions |
| 29 | Troubleshooting |

Your iTwin

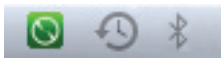
One Half of iTwin



- A** iTwin connector
- B** USB port connector
- C** iTwin activity indicator (LED)

3 Essential Parts of the iTwin Interface

1 Menu Bar



2 Local Files View



Local Files

3 Remote Files View

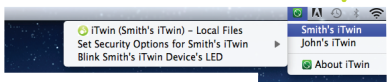
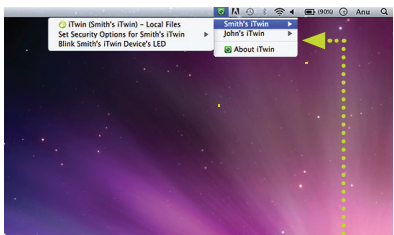


Remote Files

1 Menu Bar



Menu Bar
Click to activate the
Control Panel.

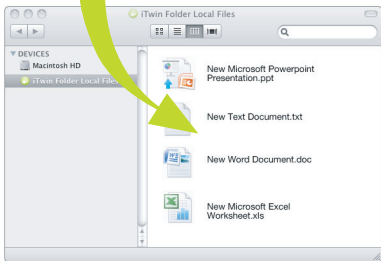


Control Panel
From here, you can access iTwin
info and the Local and Remote Files
Views.

2 Local Files View



Share Files or Folder
Drop your files or folder into the Local Files View.



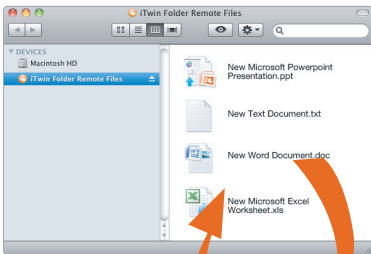
Local Files View

Here's where all the files or folders to be shared are placed.

3 Remote Files View

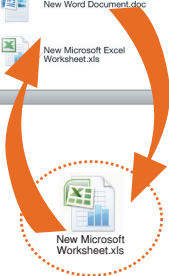
Remote Files View

Here's where you can access all the shared files and folders from the Remote computer.



Access Files

Copy or directly open files from here. Drag a file/folder in here to upload it.



Installing iTwin on Mac OS X

- 1 Go to www.iTwin.com/Mac and click on 'Install' button.
- 2 Follow the steps given on the webpage to install iTwin.
- 3 At the end of the installation, with both halves of iTwin connected together, plug the device into the computer.

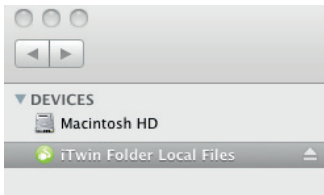
4

Register your email address to receive a unique code and URL. (Use these to remotely disable the connection between the two halves of your iTwin, in the event of loss of one half.)



Note: If you ever re-'pair' the two halves, please re-register your email address. This is because a re-pairing deletes any existing disable code.

- 5 The iTwin Local Files View appears. iTwin is now installed. And the two halves of iTwin are securely 'paired'.



- 6 Detach half of iTwin to take it with you on-the-go. (If the other Mac into which you plug this half does not have iTwin installed, please follow the instructions on Page 6.)



Warning: You cannot remotely disable the connection between the two halves of iTwin (when one half is lost) unless you register your email address now. See also 'Preventing Unauthorized Access', page 17.

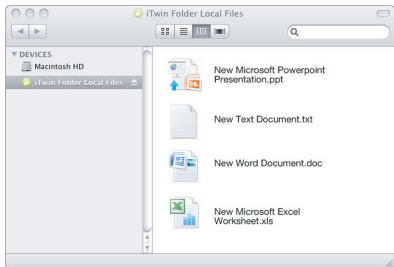
Sharing Files & Folders For Accessing On-The-Go

- 1 Plug in either the full iTwin device or just one half of iTwin. The iTwin Local Files View appears.

Note: If you close the iTwin Local Files View, to re-open it, click on the iTwin icon in the Menu Bar and choose 'iTwin - Local Files'.



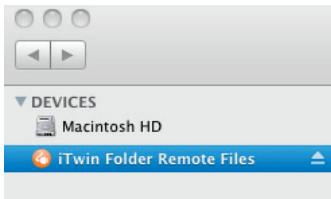
- 2 Drag & drop as many files & folders as you like into the iTwin Local Files View. (These files will be accessible on-the-go.)



- 3 Leave half of iTwin plugged into that computer.
- 4 Leave that computer powered on & connected to the Internet.
- 5 Take the other half of iTwin with you wherever you go.

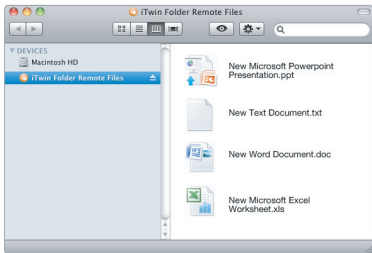
Accessing or Copying Files & Folders On-The-Go

- 1 With half of iTwin plugged into a Remote computer, plug the other half of iTwin into the Local, online computer. The iTwin Remote Files View appears, showing the Remote files.



Note: If this local Mac computer does not have iTwin installed, please follow the instructions on Page 6.

- 2 To copy the Remote computer's shared files & folders onto the Local computer, drag & drop them from the iTwin Remote Files View onto the desktop or into any folder on the Local computer. The files will be copied to that location.



Note: If you close the iTwin Remote Files View, to re-open it, click on the iTwin icon in the Menu Bar and choose 'iTwin - Remote Files'.



Backing up Files & Folders On-The-Go

You can back-up (upload) files from Local computer to the Remote computer using iTwin.

- 1 With half of iTwin plugged into a Remote computer, plug the other half of iTwin into the Local, online computer. Go to the iTwin Remote Files View (if it is not visible, open it via the iTwin icon in the Menu Bar).

- 1 Select the files & folders you want to back-up and drag & drop them into the iTwin Remote Files View or into a folder in the iTwin Remote Files View.
- 2 The files will now be securely backed up (uploaded) to the Remote computer's desktop or to the chosen Remote folder, respectively.

Preventing Unauthorized Access

iTwin provides military-grade encryption. But as a precaution in case of possible loss of one half of iTwin, choose any of these 3 ways to prevent unauthorized access to your data. Don't wait till it's too late.

Method 1: Remote Disable

With both halves of iTwin connected together, plug iTwin into an online computer. Click the iTwin icon in the Menu Bar and select 'Security Options' followed by 'Generate iTwin disable code'.

Upon registration, an email will be sent to you with instructions on disabling the connection between the two halves of your iTwin.

Method 2: Password

With both halves of iTwin connected together, plug iTwin into an online computer. Click on the iTwin icon in the Menu Bar and select 'Security Options' followed by 'Set iTwin Password'.

Once set, the password will be required to use your iTwin.

Note: To delete the password, connect both halves of the iTwin and plug into the computer. The existing remote disable code (if any) will also be deleted and you will be prompted to create a new one.

To set a new password, follow the steps above.

Method 3: Manual Disconnect

If you lose one half of a paired iTwin, unplug the other half from your computer. Files on this computer can no longer be remotely accessed.

Using Multiple iTwins on a Computer

This section describes the additional functionality provided by the 'iTwin Multi' feature.

Note: iTwin Multi was a free upgrade sent out in Dec 2011. It allows multiple iTwins to be plugged into a computer simultaneously.

Plug a paired device into a computer.



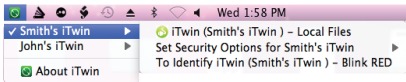
Set a name for this pair. This helps identification amongst multiple devices. We suggest using a name which identifies the person to whom one half of this device will be handed.

Plug a second paired device into the same computer.



Set a different name for this pair.
Repeat these steps as many times
as required.

Note: The limit on number of
devices simultaneously plugged
into a computer is 20.

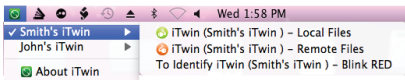


Access options for the different (or same) devices via the iTwin Control Panel.

- Use the 'Local Files' menu item to open the respective iTwin Local Files View. As usual.
- Use the 'Security Options' menu item to set security credentials, as usual.
- Use the 'Blink Red' menu item to identify the particular iTwin.

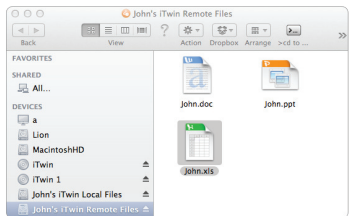
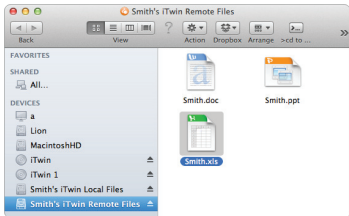
Share files and folders as usual by dragging and dropping. For each device, you can share a different set of files & folders.

Separate one half each from the various devices and pass the halves to various parties. Each party will be able to access the files shared via her iTwin device upon plugging in the respective half.



Access options (for the single halves plugged into the computer) via the iTwin Control Panel.

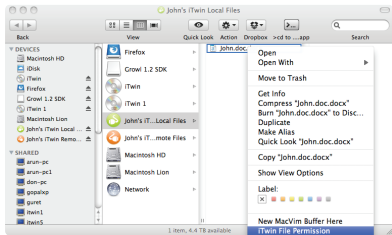
Use the 'Remote Files' menu item to view the files shared at the other computer, for any iTwin pair.



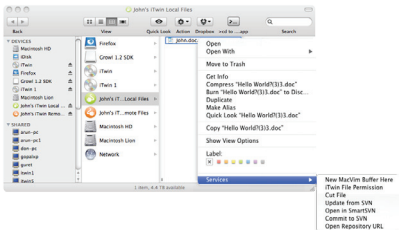
Use the Finder Sidebar to toggle between Local & Remote Files Views and also to switch between different iTwin devices. On OS X, you can open more than one iTwin View at the same time.

Setting Read/Write Permissions

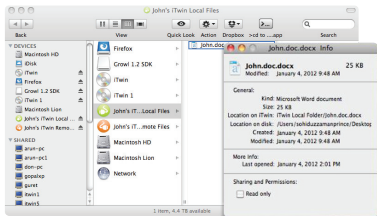
This section describes how to set Read/Write permissions for the shared files. This feature provides a greater degree of control to the user.



Right-click on any file/folder within the iTwin Local Files View and select **'iTwin File Permission'**.



Note: iTwin File Permission works as a service on your computer. If you have multiple services running, then Right-click on any file/folder within the iTwin Local Files View and select '**Services -> iTwin File Permission**'.



To allow Read-Only access to that file/folder, click the 'Read-Only' check box.

Note: The default setting is to allow the other party editing rights. Using this feature, you can change that for any or all shared files and folders.

To change a file/folder back from Read-Only to full editing rights, unclick the 'Read-Only' check box.

Troubleshooting

If you encounter problems using iTwin, please do the following:

- 1 Check your Internet connection.
- 2 Unplug iTwin and re-plug into your computer.
- 3 For more support, visit iTwin.com/support or email helpdesk@iTwin.com.



iTwin

The USB Drive Reinvented

